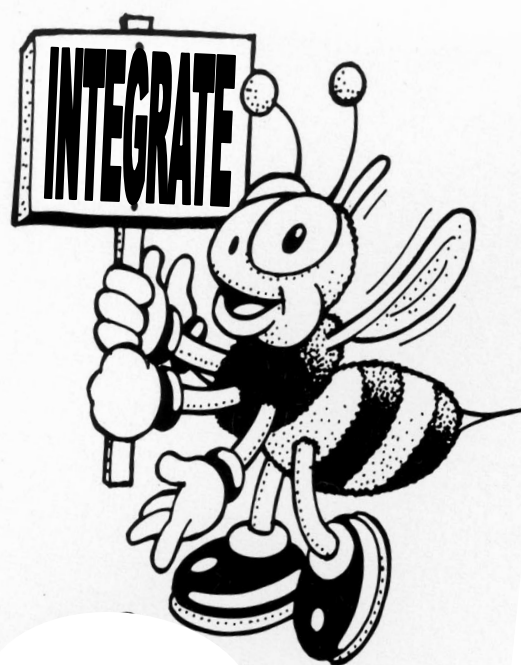


# ***The Eleventh Annual Pitt Integration Bee***

**The  
2011 Integration Bee:**

***a high-spirited  
competition to evaluate  
integrals, with \$300 in  
prizes at stake!***



**Alumni Hall, room 343**

**Friday,**

**April 1<sup>st</sup>, 2011, 7 pm**

**Any University of  
Pittsburgh undergrad  
may enter; spectators  
are encouraged to cheer  
on participants and to  
enjoy refreshments &  
door prizes!**

**Sponsored by:**

**The University of Pittsburgh Honors College & Dept. of Mathematics**

**Contact Jon Rubin (412-624-6157, [jonrubin@pitt.edu](mailto:jonrubin@pitt.edu)) ASAP to enter**

**Complete rules available at: [www.math.pitt.edu/~bee.html](http://www.math.pitt.edu/~bee.html)**